

Love 'Em

Words and Music by Lisa Gungor,
Lydia Hendrickson, Rick Seibold
and Noah Rubin

Intro

♩ = 88

A Bm A/C#



When you see one a - no - ther, all your sis-ters and bro

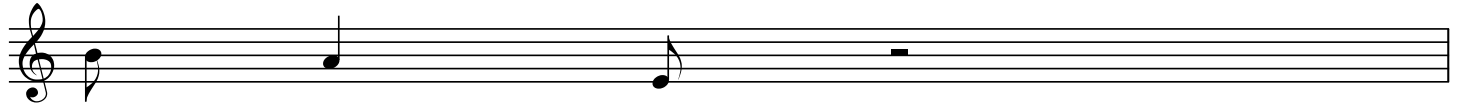
3 A/C# D E(sus4)



- thers, we're a part of each o - ther_ Love 'em like you

5 Bm7

A



love your - - self

Verse 1

6 A Bm A/C#

A/C# D E(sus4)



When we come to - geth - er when we share the light_

8 F#m C#m7 D

Bm7 A



eve - ry - thing, eve - ry - thing, eve - ry - thing's gon - na be al - right

10 A Bm A/C#

A/C# D E(sus4)



when we love one a - no - ther if we can see through the ice

12 F#m C#m7 D

Bm7 A



eve - ry - thing, eve - ry - thing, eve - ry - thing's gon - na be al - right When you see one a - no

Chorus

14 A Bm A/C# A/C# D E(sus4)
 - ther, all your sis-ters and bro - thers, we're a part of each o -

16 F#m C#m7 D Bm7 A
 - ther_ Love 'em like you love your - self When you see one a - no-

18 A Bm A/C# A/C# D E(sus4)
 - ther, all your sis-ters and bro - thers, we're a part of each o -

20 F#m C#m7 D Bm7 A
 - ther_ Love 'em like you love your - self

Verse 2

22 A Bm A/C# A/C# D E(sus4)
 If you can't love the o - ther Then your hate blinds a - way

24 F#m C#m7 D Bm7 A
 take a look in the mir-ror and_ love your_ self_ keep on hold-

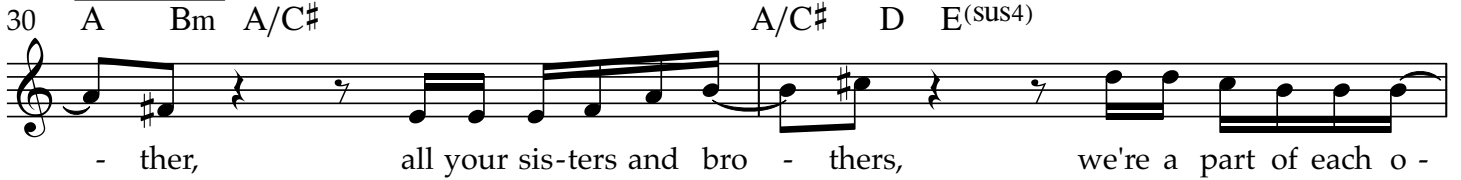
Pre-Chorus

26 A Bm A/C# A/C# D E(sus4)
 ing on through the night, There is hope in the morn-ing light don't lose hope

28 F#m C#m7 D Bm7 A
 when you're in the fight You're gon na be al - right When you see one a - no-

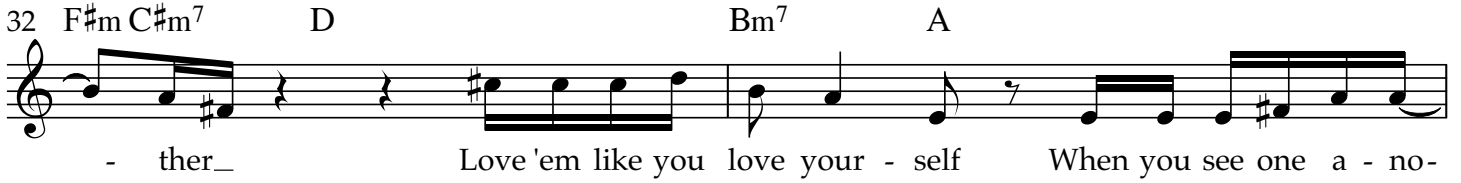
Chorus

30 A Bm A/C# A/C# D E(sus4)



- ther, all your sis-ters and bro - thers, we're a part of each o -

32 F#m C#m7 D Bm7 A




- ther_ Love 'em like you love your - self When you see one a - no -

34 A Bm A/C# A/C# D E(sus4)



- ther all your sis-ters and bro - thers we're a part of each o -

36 F#m C#m7 D Bm7 A



- ther_ Love 'em like you love your - self

Bridge

38 A Bm A/C# A/C# D E(sus4)



If you're in the mid-dle, or on the left, or on the right, just take a step

40 F#m C#m7 D Bm7 A



back you'll see that it - 'll be al - right

42 A Bm A/C# A/C# D E(sus4)



If you're in the mid-dle, or on the left, or on the right, just take a step

44 F#m C#m7 D Bm7 A



back you'll see that it - 'll be al - right

Instrumental

46 A Bm A/C#

A/C# D E(sus4)



48 F#m C#m7 D

Bm7 A



50 A Bm A/C#

A/C# D E(sus4)



52 F#m C#m7 D

Bm7 A



When you see one a - no -

Chorus

54 A Bm A/C#

A/C# D E(sus4)



- ther, all your sis-ters and bro - thers, we're a part of each o -

56 F#m C#m7 D

Bm7 A



- ther_ Love 'em like you love your - self When you see one a - no -

58 A Bm A/C#

A/C# D E(sus4)



- ther, all your sis-ters and bro - thers, we're a part of each o -

60 F#m C#m7 D

Bm7 A



- ther_ Love 'em like you love your - self

62 A Bm A/C# A/C# D E(sus4)

If you're in the mid-dle, or on the left, or on the right, just take a step

64 F#m C#m7 D Bm7 A

back you'll see that it - 'll be al - right

66 A Bm A/C# A/C# D E(sus4)

If you're in the mid-dle, or on the left, or on the right, just take a step

68 F#m C#m7 D Bm7 A

back you'll see that it - 'll be al - right